

NO LIMIT 45

# DETREMMERIE

BATHROOM FURNITURE

OPMERKINGEN / REMARQUES: YV@DETREMMERIE.BE



TECHNISCHE FICHE  
FICHE TECHNIQUE

60

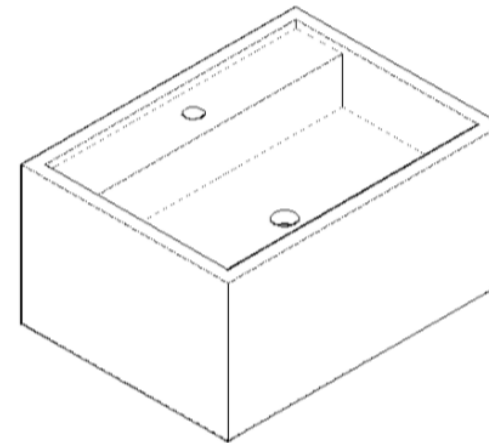
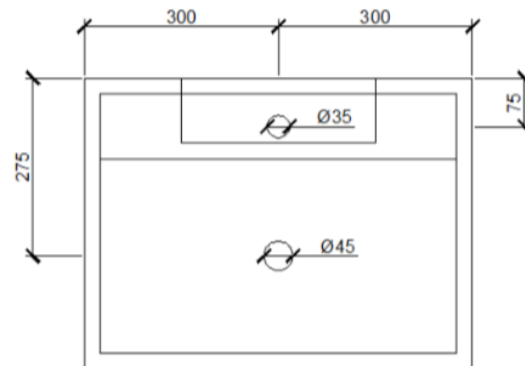
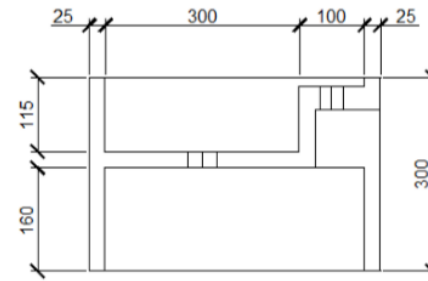
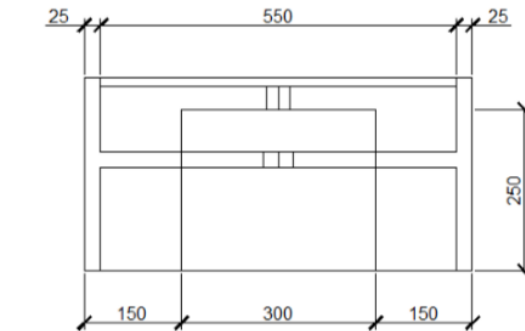
60 x 45

# DETREMMERIE

BATHROOM FURNITURE

OPMERKINGEN / REMARQUES: YV@DETREMMERIE.BE

## ENKELE WASKOM / SIMPLE VASQUE



TECHNISCHE FICHE  
FICHE TECHNIQUE

60

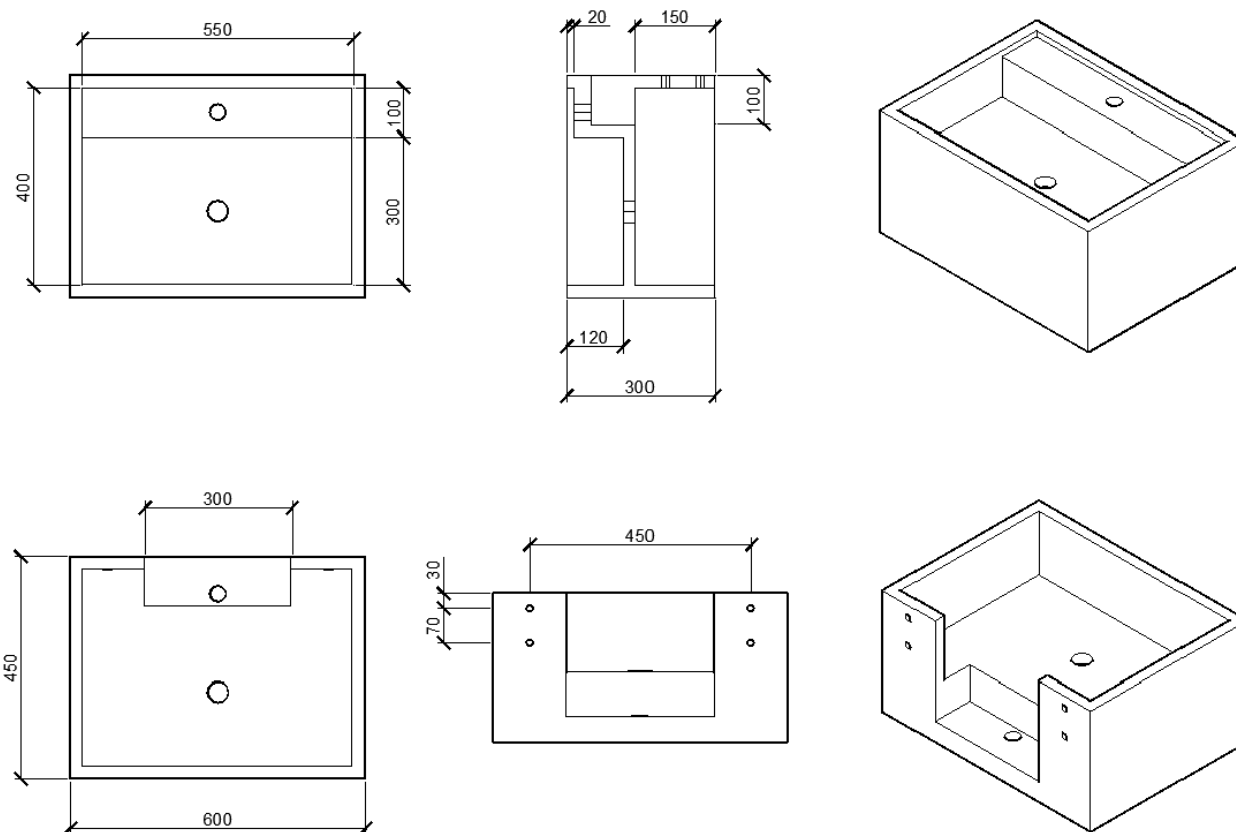
60 x 45

DETREMMERIE

BATHROOM FURNITURE

OPMERKINGEN / REMARQUES: YV@DETREMMERIE.BE

ENKELE WASKOM / SIMPLE VASQUE



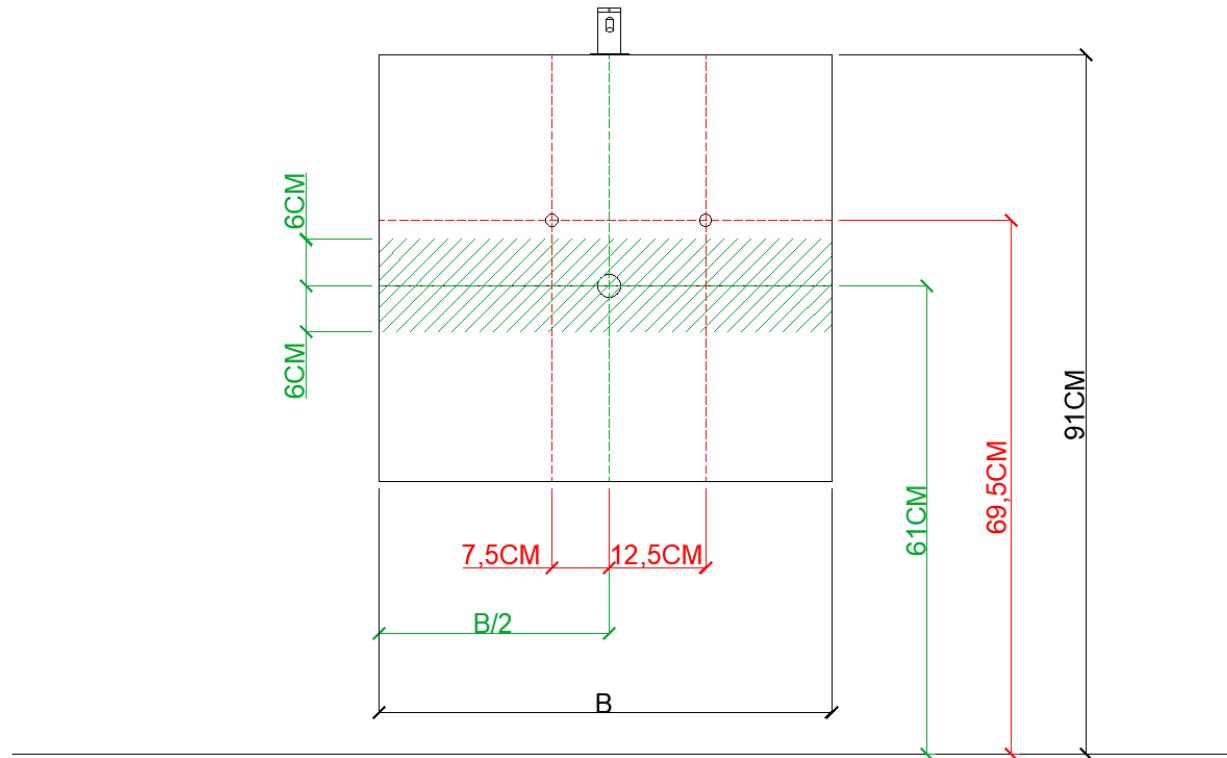
AANSLUITSCHEMA  
SCHÉMA DE RACCORDEMENT



DETREMMERIE  
BATHROOM FURNITURE

OPMERKINGEN / REMARQUES: YV@DETREMMERIE.BE

ENKELE WASKOM / SIMPLE VASQUE

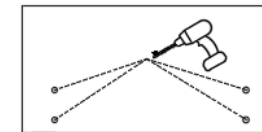
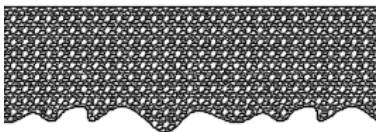
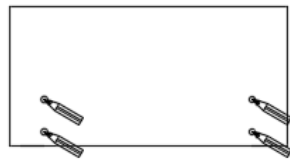
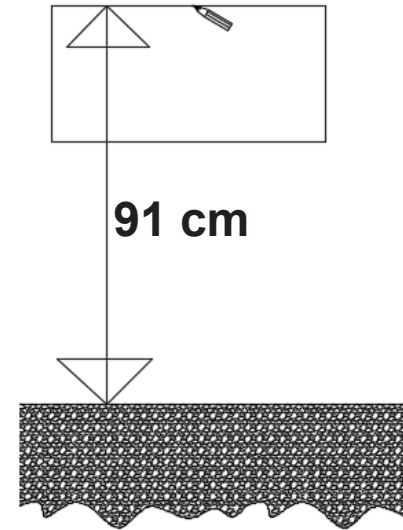
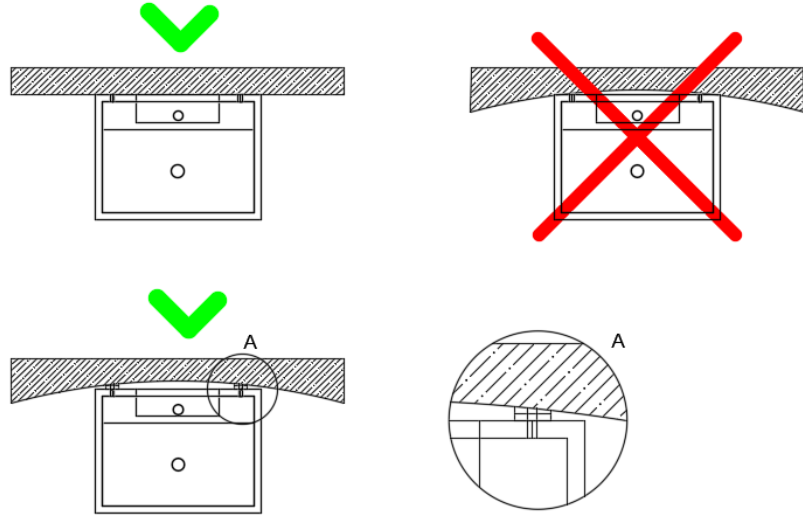


AH onderbouwkasten met 3 lades = 91 cm + dikte wastafel /  
AH sous-meubles avec 3 tiroirs = 91 cm + épaisseur de la table-vasque

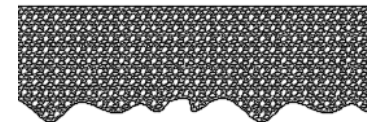
= tolerantiezone afvoer /  
zone de tolérance de l'écoulement

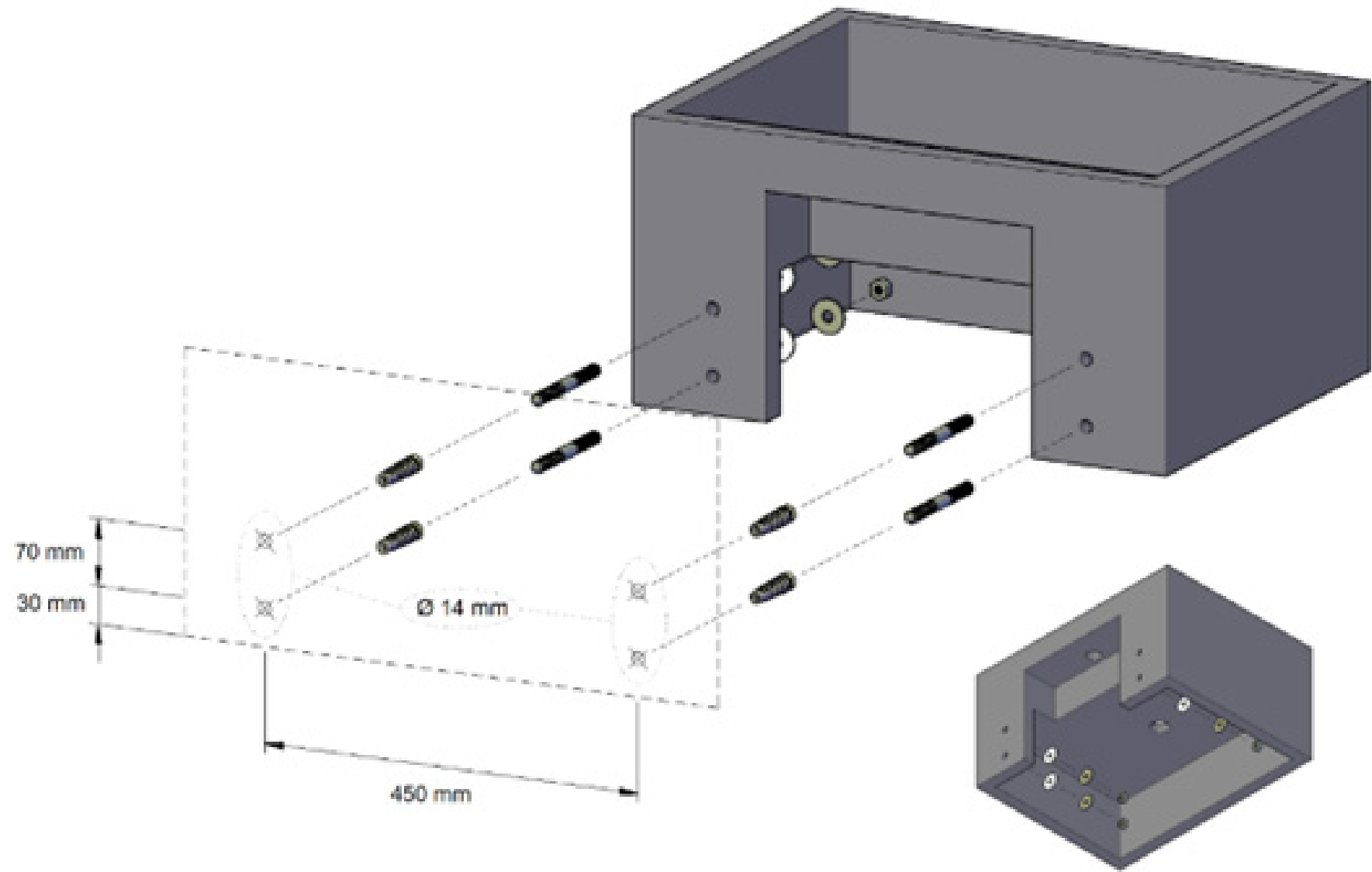
BEPALLEN POSITIE MUURKRANEN = ZIE TECHNISCHE FICHE WASTAFEL /  
DÉTERMINER LA POSITION DES ROBINETS MURALS = VOIR FICHE TECHNIQUE DE TABLE-VASQUE !!!

# MONTAGESCHEMA WASTAFEL 210



**Ø14**





**LICHT AANSPANNEN -> MAX 10 NEWTON METER !!!!**  
**SERREZ LÉGÈREMENT -> MAX 10 NEWTONS MÈTRES !!!!**

